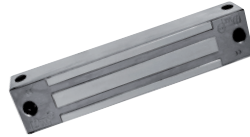


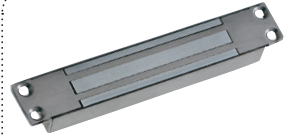


CDVI

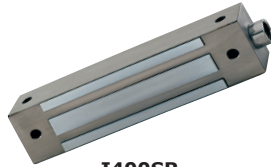
Security to Access



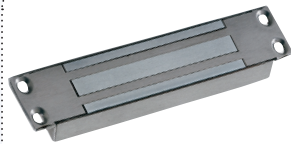
I180SR



I180ER



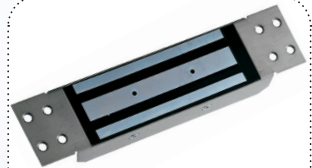
I400SR



I300ER



I500SR



I500ER

I180ER
I180SR
I300ER
I400SR
I500ER
I500SR

External maglocks

1] GENERAL INFORMATION

- **Stainless steel.**
- **Surface mounting or mortice**.**
- **Monitored.**
- **Holding force:** 180, 300, 400 or 500kg**.
- **Security rope**.**
- **High corrosion resistance.**
- **Delivered with armature plate.**
- **No mechanical wear.**
- **Ease of installation.**
- **Recommended for outdoor use.**
- **Fail safe (Door unlocked when power off).**
- **Built-in electronic protection to eliminate back EMF.**

- Electromagnetic lock dimensions (L x W x D):

- I180SR = 175 x 32,5 x 22mm
- I400SR = 230 x 43,5 x 29,5mm
- I500SR = 230 x 61 x 41mm
- I180ER = 201 x 32 x 22mm
- I300ER = 228 x 38 x 27mm
- I500ER = 288,5 x 64 x 37,5mm

- Armature dimensions (L x W x D):

- 180kg = 130 x 32 x 9mm
- 300kg = 185 x 38 x 11mm
- 400kg = 185 x 45 x 12mm
- 500kg = 185 x 60 x 12mm

- Power supply: 12/24V dc.

- Power absorption:

- 12 V DC = 550mA,
- 24 V DC = 275mA.

Refs	Holding force	Monitored
I180SR	180kg	✓
I400SR	400kg	✓
I500SR	500kg	✓
I180ER	180kg	✓
I300ER	300kg	✓
I500ER	500kg	✓



EC certification



IP54



WEEE



RoHS

Recommended power supplies



ARD212



BS602

2] REMINDERS AND RECOMMENDATIONS

The function of an electromagnetic lock is to ensure the locking of an access point. This document is a guide of installation which will allow you to secure the installation according to the characteristics of the product, the site and the environmental requirements.

APPROVAL RELATIVE TO EMERGENCY EXITS

In the case of an installation of electromagnetic lock on emergency exits, it is imperative to make sure that these exit points will be automatically free in case of fire alarm, to open in the event of a fire alarm to allow evacuation of the premises. The electromagnetic lock installed on emergency exits must be in accordance with the fire approval department (Ex: In France = NF 61-937).

For more information, contact CDVI, the local fire officer or the safety officer responsible for the building.

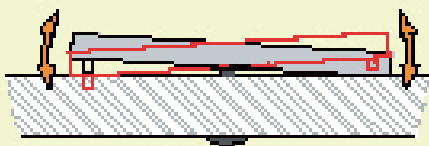
** Depending on the version.

POWER SUPPLY

An electromagnetic lock always operates in DC current, a very low safety voltage. The Diax® electromagnetic lock is recommended for use with power supplies manufactured by CDVI, however, other power supplies may be used on condition that they are of equivalent quality and characteristics rectified, filtered, regulated and protected by fuse in primary and secondary sectors.

MOUNTING RECOMMENDATIONS

- Define the level of security of the access.
- Determine the maximum strength of holding force to this level of security.
- Select the Diax® electromagnetic lock according to the environment, the inside, the outside, the climatic constraints, (For example: stainless steel dedicated to an outside use).
- Always install the electromagnetic lock on the secure side of the place to be secured.
- Indeed make sure that the frame and opening, receiving or supporting the electromagnetic lock, armature plate and their accessories, are solid and resistant to damage or wear over a period of time.
- Consider any bracketry required for the assembly according to the type of support receiving the electromagnetic lock and armature plate.
- Define the passage of cables to ensure the protection against the vandalism and the environmental requirements (in particular through flexible hoses of door, glands, gutters, cross cables, plastic tubes).



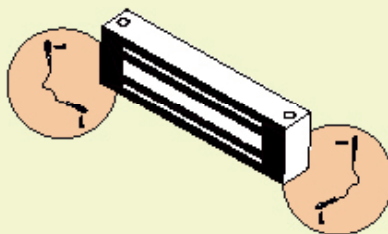
Armature plate

- It is vital to fix the electromagnetic lock and armature plate solidly on their supports.
- Make sure that the magnet and the armature meet evenly over their entire mating surfaces.
- The Armature plate must be able to pivot slightly about its center mounting screw to compensate for any door misalignment.

Security ropes

The electromagnetic lock undergoes repeated shocks and the vibration at the points of fixation on the frame (frequencies of openings / closures, attempt of opening wears closed and attempts of vandalism) which can loosen the fixing bolts/ screws. To prevent the risk of the electromagnetic block from falling, install both security ropes supplied, to guarantee the safety of the users (see attached plan).

Security ropes (fixing on the magnetic locks and to the frame)





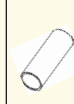


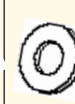






MAINTENANCE








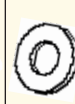
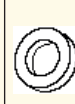
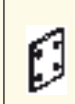


The Electro magnet and armature plate have a specific treatment which strengthens the protection against wear and corrosion. These products do not require high maintenance. Nevertheless to ensure optimum performance, it is recommended to clean regularly the surfaces in contact of the electro magnet and armature plate with a cloth and non abrasive products. If traces of corrosion appear, it is recommended to clean and oil the contact surfaces. Check and tighten regularly all the fixings of the Electro magnet and ensure that while the armature is able to pivot on its mounting, the fixing bolt is not liable to loosen (we recommend thread-lock for all fixing bolts).

3] PACKAGE CONTENTS





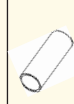


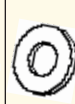
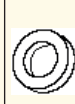


VERSION I180ER

											
Mortice magnetic lock	Armature plate	Stainless steel Screw 5x8	Cap nut	Guide piece	Stainless steel screw with rubber washer 5x35	Stainless steel Roll pin 5x16	Stainless steel washer 6x13	Rubber washer 6x10	Joggle bracket	3mm key	Installation Manual
1	1	8	1	1	1	2	2	1	2	1	1


















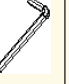


VERSION I300ER

											
Mortice magnetic lock	Armature plate	Stainless steel Screw 5x8	Cap nut	Guide piece	Stainless steel screw with rubber washer 8x25	Stainless steel Roll pin 5x16	Stainless steel washer 10x22	Rubber washer 9x15	Joggle bracket	5mm key	Installation Manual
1	1	8	1	1	1	2	2	1	2	1	1









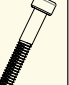










VERSION I500ER

										
Mortice magnetic lock	Armature plate	Stainless steel Screw 5x8	Cap nut	Guide piece	Stainless steel screw with rubber washer 8x25	Stainless steel Roll pin 5x16	Stainless steel washer 10x22	Rubber washer 9x15	5mm key	Installation Manual
1	1	8	1	1	1	2	2	1	1	1



VERSION I180SR

											
Surface mount magnetic lock	Armature plate	Fixing plate	Stainless steel screw 3x10 (security ropes)	Cap nut	Guide piece	Steel screw nut 6x11	Seal up anchor	black steel screw 5x35	Stainless steel screw 5x35	Stainless steel screw with rubber washer 5x35	Stainless steel Roll pin 5x16
1	1	1	2	1	1	1	4	1	2	1	2
											
Stainless steel Strut 10x15	Stainless steel washer 6x13	Hole cover plate	Rubber washer 6x10	3mm key	4mm key	Security rope	Installation Manual				
2	2	4	1	1	1	2	1				

I400SR - I500SR

											
Surface mount magnetic lock	Armature plate	Stainless steel screw 3x10 (security ropes)	Cap nut	Guide piece	Steel screw nut 6x11	Seal up anchor	black steel screw 6x35	Stainless steel screw 6x40	Stainless steel screw 6x50	Stainless steel screw with rubber washer 8x35	Stainless steel Roll pin 5x16
1	1	2	1	1	1	4	1	2	2	1	2
											
Stainless steel washer 10x22	Stainless steel Strut 10x15	Hole cover plate	Rubber washer 9x15	5mm key	Security rope	Installation Manual					
2	2	4	1	1	2	1					

4] OPTIONAL ACCESSORIES (ONLY FOR ARMATURE PLATE)

	SURFACE MOUNT	
		
References	Z1	Z3Z4Z5
Description	"Z" bracket for 180kg	"Z" bracket for 300, 400 and 500kg

5] ELECTRICAL CONNECTIONS

Terminal block	Correspondence	I500E	I180ER - I180SR I300ER - I400SR I500SR - I500ER
+	12 or 24V dc	■	■
-	- 0 V	■	■
N.C	NC (Normally closed)	-	■
COM	COM	-	■
N.O	NO (Normally open)	-	■

The NO/NC signal only switches when the door is closed with the power to it on.

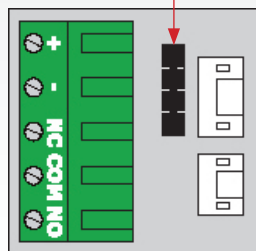
IMPORTANT NOTE



12V dc factory setup

Check the jumper position before connecting the lock to the input current. A wrong position could damage the lock. This type of damage is not covered by the warranty.

WITH BUILT-IN PCB BOARD



I180ER - I180SR
I300ER - I400SR
I500SR - I500ER



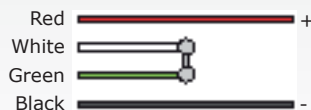
I500E

DIRECT CONNECTION

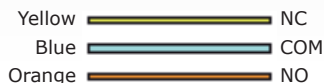
12V DC



24V DC



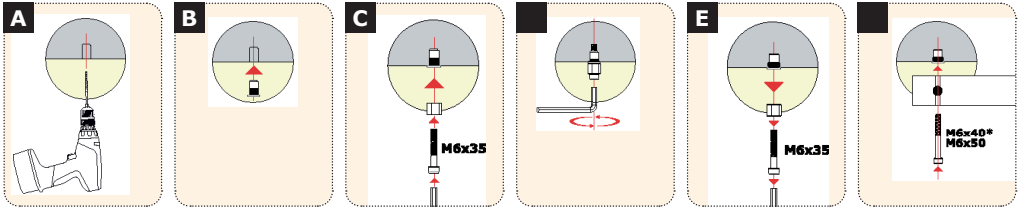
CONTACT



6] INSTALLATION

SURFACE MOUNT VERSIONS: I180SR - I300SR - I400SR - I500SR

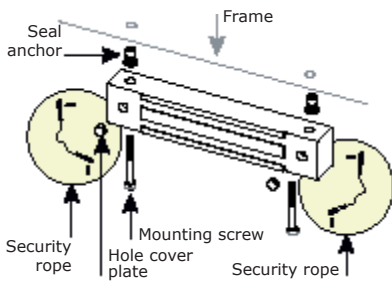
Seal up anchor mounting



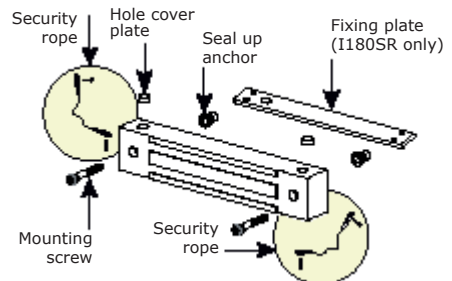
*According versions.

Surface mount electromagnetic lock mounting

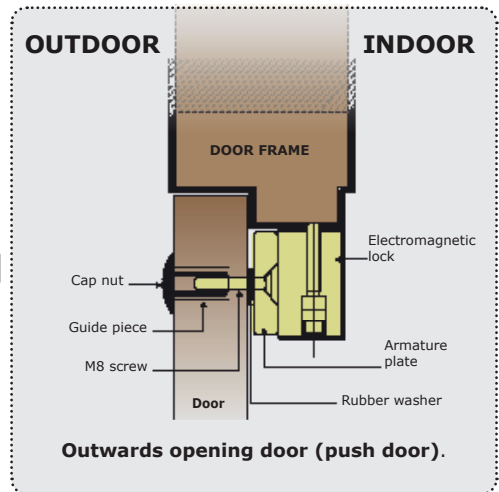
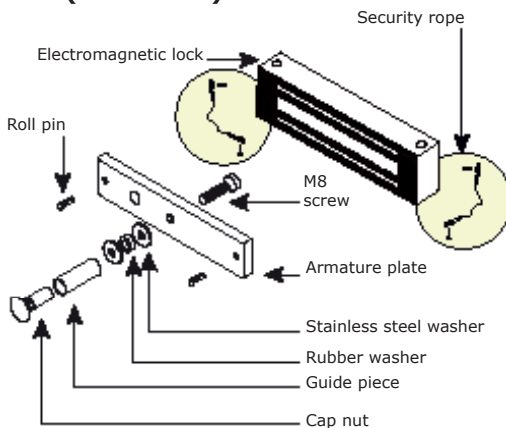
VERTICAL MOUNTING



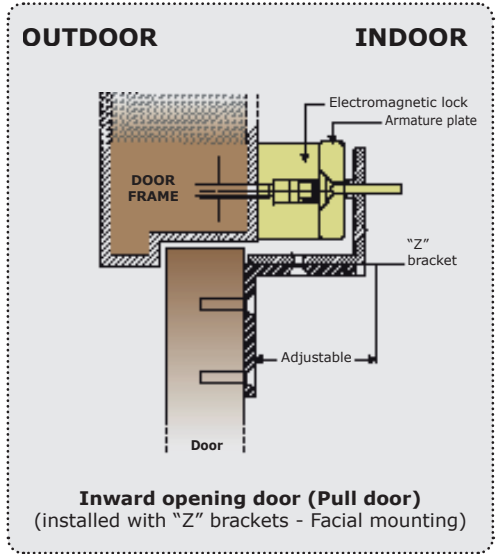
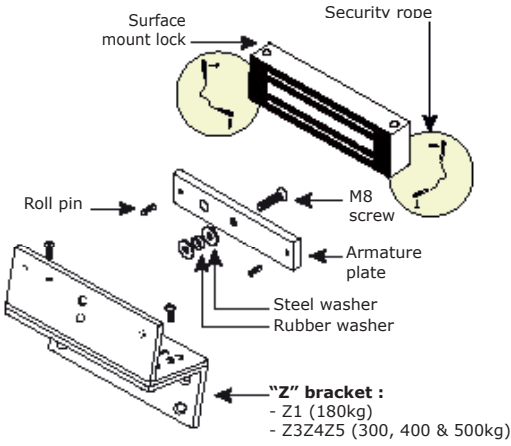
FRONT MOUNTING



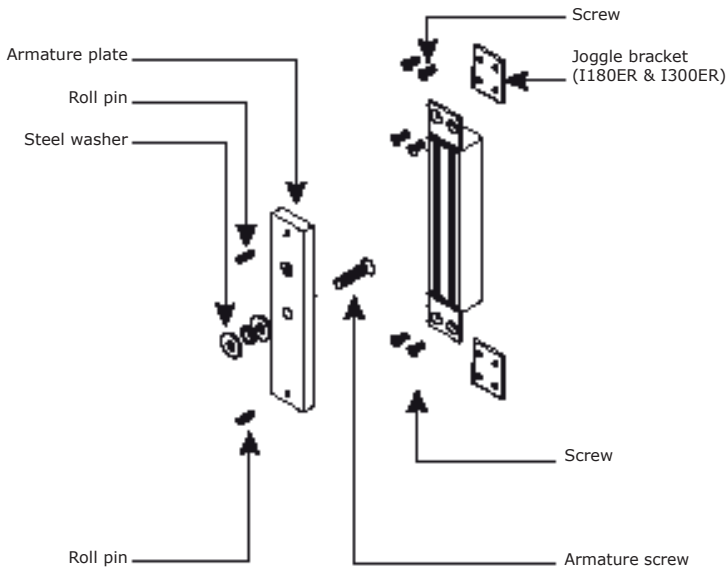
Installation on an outward opening door (Push door)



Installation on an inward opening door (Pull door)



MORTICE VERSIONS: I180ER - I300ER - I500ER



7] FAULT FINDING

PROBLEM	POSSIBLE CAUSE	SOLUTION
Door locking impossible	The lock is not receiving DC current.	<ul style="list-style-type: none"> - Check that the wires are connected to the right terminals. - Check that the power supply is compatible. - Check that the lock is connected to the circuit correctly.
Holding force reduced	The lock and the armature are not lined up with each other.	<ul style="list-style-type: none"> - Check that the lock is connected to the circuit correctly. - Check that the electromagnet and the armature are properly aligned. - Check that the contact faces are free from dirt and rust. - Check that the armature is soft mounted.
	Low voltage or armature jammed.	<ul style="list-style-type: none"> - Check that the lock is receiving the correct power supply satisfactorily. - check the tightening of the armature and the condition of the rubber.
Faulty reed switch	Voltage too low. Misalignment.	<ul style="list-style-type: none"> - Check the power supply. - Cable cross section to be determined according to the power supply and the locking. - e.g.: $2 \times 1.5\text{mm}^2 \geq 10\text{m}$.

8] LIMITED LIFETIME WARRANTY [EXTRACT]*

CDVI warrants this product to be free from defects in material and workmanship, when it has been installed in accordance with the manufacturer's instructions and has not been modified or tampered with. Only product recognized by CDVI to be defective should be returned under these warranty terms if accompanied by an RMA (Return Material Authorization Number) provided by CDVI. CDVI, at its option, shall repair or replace the defective product at CDVI premises or at any CDVI approved service center. This warranty does not cover any damage due to accident, misuse, abuse or negligence. This warranty is valid only if the product is registered, within 1 month from delivery to the final customer. To obtain full details of this warranty and to register the product to commence the "Limited Lifetime Warranty", complete the enclosed registration card and return it, either by e-mail or post, to the relevant CDVI address or completion of the on line registration at www.cdvigroup.com. Repair or replacement of the defective product is the exclusive remedy. CDVI shall not be liable for any incidental or consequential damages arising from any defect in, or malfunction of, its product. In no event the entire liability can not exceed the purchase price of the product. The CDVI local country contact details can be found on line by visiting www.cdvigroup.com or on the back cover of the installation manual.

DISCLAIMER OF WARRANTY: EXCEPT AS STATED ABOVE, CDVI MAKES NO WARRANTIES, EITHER EXPRESS OR IMPLIED, AS TO ANY MATTER WHATSOEVER, INCLUDING THE CONDITION OF ITS PRODUCTS, THE TRANSPORTATION, THEIR MERCHANTABILITY OR FITNESS FOR ANY PARTICULAR PURPOSE.

* Refer to complete limited lifetime warranty on cdvigroup.com website.

1] PRODUKTSPECIFIKATION

- **Rostfri.**
- **Utanpåliggande eller infälld*.**
- **Indikering.**
- **Hållkraft:** 180, 400, 300 eller 500 kg*.
- **Inkluderad säkerhetsvajer.**
- **Levereras med ankarplatta.**
- **Inga rörliga delar.**
- **Enkel att installera.**
- **Rekommenderas för utomhusbruk.**
- **Omvänd funktion (dörren är upplåst när strömmen är bruten).**
- **Inbyggt elektronikskydd.**

- Elektromagnetens dimensioner (L x B x H):

- I180SR = 175 x 32,5 x 22mm
- I400SR = 230 x 43,5 x 29,5mm
- I500SR = 230 x 61 x 41mm
- I180ER = 201 x 32 x 22mm
- I300ER = 228 x 38 x 27mm
- I500ER = 288,5 x 64 x 37,5mm

- Ankarplattans dimensioner (L x B x H):

- 180kg = 130 x 32 x 9mm
- 300kg = 185 x 38 x 11mm
- 400kg = 185 x 45 x 12mm
- 500kg = 185 x 60 x 12mm

- Strömförsörjning: 12/24 V dc

- Strömförbrukning:

- 12 V DC = 550 mA
- 24 V DC = 275 mA

Refs	Holding force	Monitored
I180SR	180kg	✓
I400SR	400kg	✓
I500SR	500kg	✓
I180ER	180kg	✓
I300ER	300kg	✓
I500ER	500kg	✓



2] INFORMATION OCH REKOMMENDATIONER

Elektromagnetens funktion är att öka säkerheten genom att se till att passerkontrollen är ordentligt låst. Det här är en installationsguide som ger vägledning hur man anpassar installationen efter rådande förutsättningar med avseende på produkten, platsen den placeras på och den omgivande miljön samtidigt som man uppnår största möjliga säkerhetsnivå.

STANDARD FÖR NÖDUTGÅNGAR

Om en elektromagnet monteras vid en nödutgång är det nödvändigt att kontrollera att dörren automatiskt låses upp vid ett brandlarm för att möjliggöra evakuering. En elektromagnet som sitter på en nödutgång måste installeras i enlighet med gällande brandsäkerhetslagar och förordningar (Ex : SS-EN1155).

För mer information, kontakta CDVI, svenska brandskyddsföreningen eller säkerhetsansvarig för byggnaden.

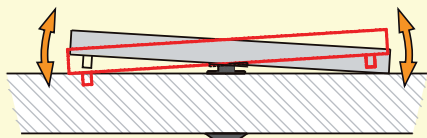
** Beroende på version.

STRÖMFÖRSÖRJNING

En elektromagnet drivs alltid med likström (DC), en säker svagströms matning. Det rekommenderas att Diax® elektromagneter används tillsammans med nättaggregat tillverkade av CDVI. Det går att använda andra nättaggregat om de uppfyller kraven på motsvarande kvalitet och egenskaper, - likriktad, filtrerad, reglerad och med dubbelautomatsäkring (primär och sekundär).

MONTERINGSINSTRUKTIONER

- Bestäm säkerhetsnivån på passerkontrollen.
- Den maximala styrkan på hållkraften anpassas till vald säkerhetsnivå.
- Välj Diax® elektromagnet utifrån omgivningen, interiört, exteriört, klimat förutsättningar, ... (Till exempel : rostfritt stål för utomhusbruk).
- Installera alltid elektromagneten på insidan på en säker plats.
- Kontrollera att dörrposten och dörrkarmen, som stöttar eller håller elektromagneten, ankarplattan med tillbehör, är robusta och står emot slitage över tid.
- Välj fästen utifrån funktion och dörrkarm som elektromagneten och ankarplattan skall monteras på.
- Bestäm hur kablar ska dras på ett säkert sätt för att skyddas från vandalisera och olika väderförhållanden (t ex genom flexibla karmöverföringar, kabelrännor, plaströr, ...).

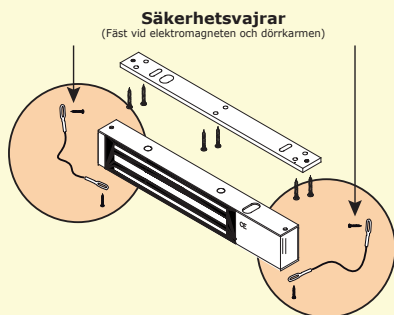


Ankarplattan

- Det är mycket viktigt att elektromagneten och ankarplattan är ordentligt fästa i underlaget.
- Se till att elektromagneten och ankarplattan möts jämnt fördelat över hela kontaktytan för att optimera hållkraften.
- Ankarplattan måste kunna vicka runt monteringskruven i mitten, för att kompensera om dörren inte är helt rak.

Säkerhetsvagnar

Elektromagnetens fästen utsätts för upprepade vibrationer och andra påfrestningar under sin livstid. Öppningsfrekvensen, stängningar, försök att öppna låst dörr samt vandaliseringsförsök orsakar slitningar och kan resultera i att monteringskruvarna blir lösa. För att förhindra elektromagneten från att falla ner montera de två säkerhetsvagnarna som följer med. Detta för att garantera säkerheten för användarna (se bild).


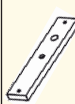





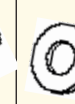
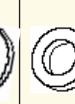





SKÖTSEL


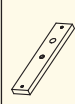




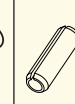


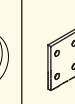

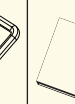
Elektromagneten och ankarplattan är specialbehandlade för att motstå rostbildning och slitage. De här produkterna kräver inte mycket underhåll. För maximal effekt bör kontaktytorna på elektromagneten och ankarplattan torkas regelbundet med en trasa och mildt rengöringsmedel. Om spår av rost uppstår, rekommenderar vi att kontaktytorna rengörs och oljas in. Kontrollera och skruva åt alla monteringskruvarna på elektromagneten regelbundet. Kontrollera även att ankarplattan kan vicka runt monteringskruven. Vi rekommenderar att låsbrickor används till alla monteringskruvarna.

3] MONTERINGSSATS


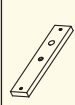








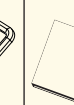
VERSION I180ER

											
Infäld elektromagnet	Ankar-platta	Rostfri skruv M5x8	Fästbult M5	Distanshylsa	Rostfri skruv med gummi-bricka M5x35	Rostfri Styrpinne 5x16	Rostfri bricka 6x13	Gummi-bricka 6x10	Montage-platta	Fast nyckel 3 mm	Installations-manual
1	1	8	1	1	1	2	2	1	2	1	1










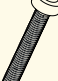










VERSION I300ER

											
Infäld elektromagnet	Ankar-platta	Rostfri skruv M5x8	Fästbult	Distanshylsa	Rostfri skruv med gummi-bricka M8x25	Rostfri Styrpinne 5x16	Rostfri bricka 10x22	Gummi-bricka 9x15	Montage-platta	Fast nyckel 5 mm	Installations-manual
1	1	8	1	1	1	2	2	1	2	1	1




















VERSION I500ER

										
Infäld elektromagnet	Ankar-platta	Rostfri skruv M5x8	Fästbult	Distanshylsa	Rostfri skruv med gummi-bricka M8x25	Rostfri Styrpinne 5x16	Rostfri bricka 10x22	Gummi-bricka 9x15	Fast nyckel 5 mm	Installations-manual
1	1	8	1	1	1	2	2	1	1	1

VERSION I180SR

											
Utanpåliggande elektromagnet	Ankarplatta	Monteringsfäste	Rostfri skruv 3x10 (säkerhetsvajer)	Fästbult	Dis-tans-hylsa	Dis-tans-hylsa 6x11	Tät-nings-hylsa	Svart metall-skruv 5x35	Rostfri skruv 5x35	Rostfri skruv med gummi-bricka, 5x35	Rostfri styrpinne 5x16
1	1	1	2	1	1	1	4	1	2	1	2
											
Rostfri bricka 10x15	Rostfri bricka 6x13	Täckplugg	Gummi-bricka 6x10	Fast nyckel 3 mm	Fast nyckel 4 mm	Säkerhets-vajer	Installations-manual				
2	2	4	1	1	1	2	1				

VERSION I400SR - I500SR

											
Utanpåliggande elektromagnet	Ankarplatta	Rostfri skruv 3x10 (säkerhetsvajer)	Fästbult	Dis-tans-hylsa	Dis-tans-hylsa 6x11	Tät-nings-hylsa	Svart metall-skruv 6x35	Rostfri skruv 6x40	Rostfri skruv 6x50	Rostfri skruv med gummi-bricka 8x35	Rostfri styrpinne 5x16
1	1	2	1	1	1	4	1	2	2	1	2
											
Rostfri bricka 10x22	Rostfri bricka 10x15	Täckplugg	Gummi-bricka 9x15	Fast nyckel 5 mm	Säkerhets-vajer	Installations-manual					
2	2	4	1	1	2	1					

4] TILLBEHÖR

UTANPÅLIGGANDE MONTAGE		
Produktnamn	Z1	Z3Z4Z5
Beskrivning	"Z"-format vinkelfäste för 180kg	"Z"-format vinkelfäste för 300, 400 och 500kg

5] INKOPPLINGAR

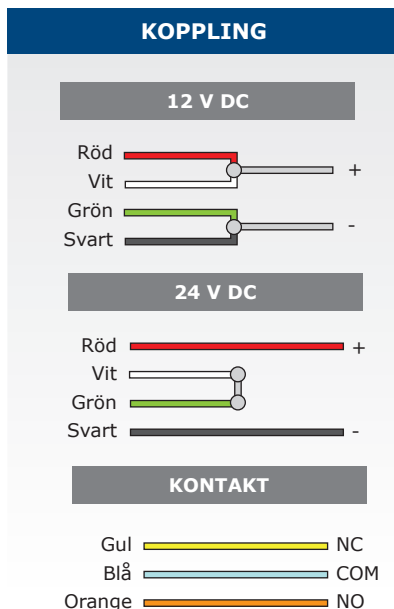
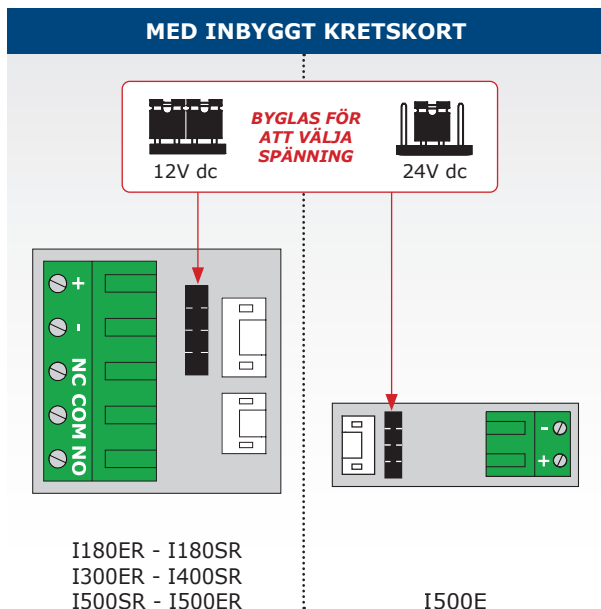
Plint	Anslutningar	I500E	I180ER - I180SR I300ER - I400SR I500SR - I500ER
+	12 eller 24 V DC	■	■
-	- 0 V	■	■
NC	NC (Omvänd funktion)	-	■
COM	COM	-	■
NO	NO (Rättvänd funktion)	-	■

Indikeringen fungerar bara när dörren är stängd och strömsatt.

OBSERVERA!

Fabriksinställning 12 V DC

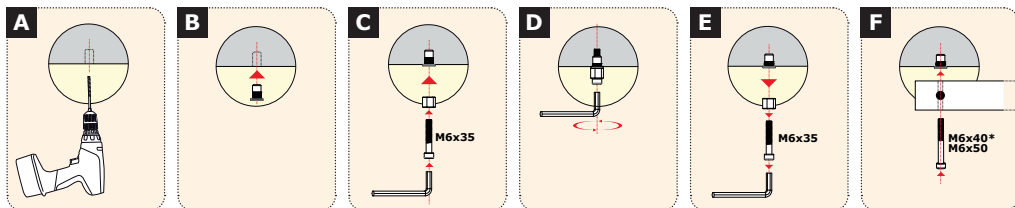
Kontrollera att byglingen sitter rätt placerad innan elektromagneten förses med ström. En felaktigt placerad byggel kan skada elektromagneten. Den här typen av skada täcks inte av garantin.



6] MONTERING

UTANPÅLIGGANDE VERSIONER : I180SR - I300SR - I400SR - I500SR

Montera tätningshylsor

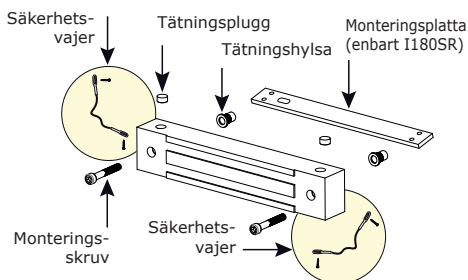
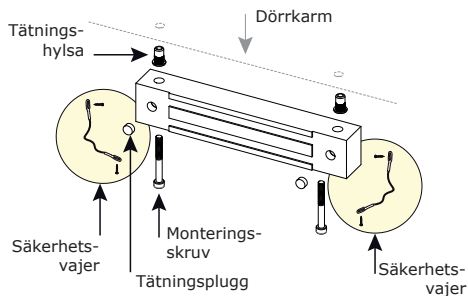


* Beroende på modell.

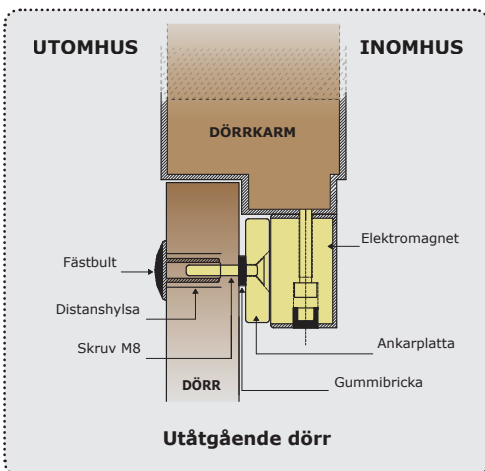
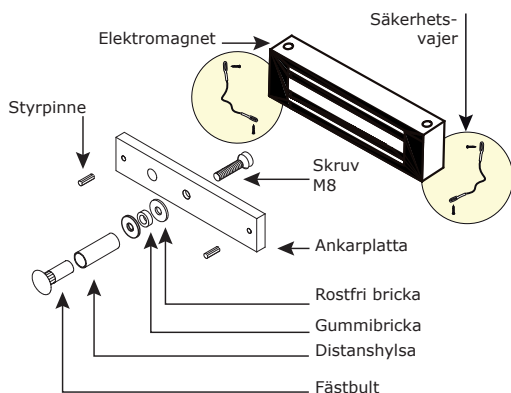
Montering av utanpåliggande elektromagnet

VERTIKALT MONTAGE

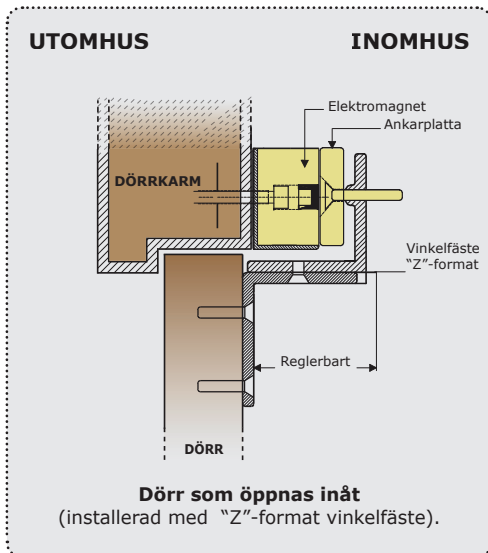
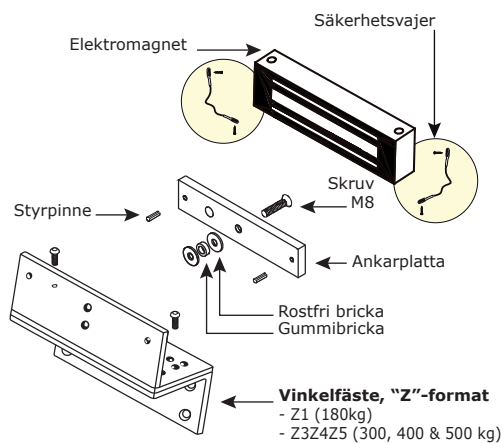
HORISONTELLT MONTAGE



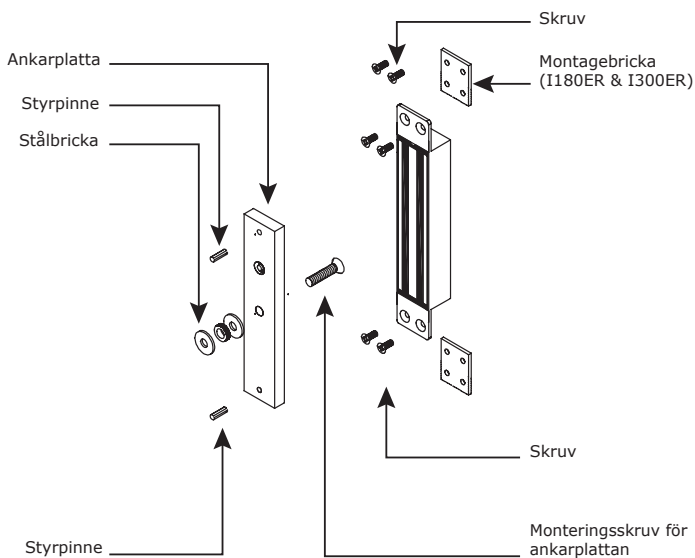
Montering på utåtgående dörr



Montering på inåtgående dörr



INFÄLLDA VERSIONER : I180ER - I300ER - I500ER



7] FELSÖKNING

PROBLEM	TROLIG ORSAK	LÖSNING
Dörren går inte att låsa	Elektromagneten får inte matarspänning DC.	<ul style="list-style-type: none"> - Kontrollera att kablarna är anslutna till rätt utgångar. - Kontrollera att nätaggregatet är rätt dimensionerat. - Kontrollera att elektromagneten får rätt spänningsmatning.
Hållkraften nedsatt	Elektromagneten och ankarplattan är inte helt parallella med varandra.	<ul style="list-style-type: none"> - Kontrollera att elektromagneten får rätt spänningsmatning. - Kontrollera att elektromagneten och ankarplattan är parallella och möts ordentligt. - Kontrollera att kontaktytorna är rena och fria från rost. - Kontrollera att ankarplattan kan vicka runt skruven.
	Låg spänningsmatning, eller ankarplattan övertäckt.	<ul style="list-style-type: none"> - Kontrollera att elektromagneten får rätt spänningsmatning. - Kontrollera att ankarplattan är fäst ordentligt och att delarna av gummi är mjuka.
Felaktig indikering	För låg spänningsmatning. Kontaktytorna möts inte helt.	<ul style="list-style-type: none"> - Kontrollera nätaggregatet. - Kontrollera kabelns dimensioner mellan nätaggregatet och elektromagneten. - ex: $2 \times 1,5\text{mm}^2 \geq 10\text{m}$

8] BEGRÄNSAD LIVSTIDSGARANTI [UTDRAG]*

CDVI garanterar att denna produkt är fri från fel i material och utförande, när den är installerad i enlighet med tillverkarens anvisningar och inte har ändrats eller manipulerats. Endast produkter godkända från CDVI som är defekta, kan returneras enligt dessa villkor. Produkten skall skickas med ett RMA nummer (returnummer) som tillhandahålls av CDVI. CDVI skall efter eget val, reparera eller ersätta den defekta produkten på CDVI egen fabrik, eller enligt CDVI auktoriserat servicecenter. Denna garanti täcker inte skador på grund av olyckshändelse, felaktig användning, missbruk eller försummelse. Denna garanti är enbart giltigt om produkten är registrerad senast 1 månad efter leverans till slutkund. För att få fullständig information om denna garanti, och att registrera produkten för att påbörja "begränsad livstids garanti" fyll i det bifogade registreringsbeviset och återsänd detta, antingen via post eller e-mail till närmaste CDVI kontor, eller registrera online på www.cdvigroup.com. Reparation eller utbyte av den defekta produkten är de två alternativ som finns. CDVI ansvarar inte för oförutsedda skador eller följdskador. Inte under några som helst omständigheter kan skulden överstiga det totala inköpspriset för produkten. Du kan hitta ditt lokala CDVI kontor genom att besöka www.cdvigroup.se eller på baksidan av installationsmanualen.

GARANTIFRISKRIVNING: Med undantag från ovanstående, ger CDVI inga garantier, varken uttryckligt eller underförstått, oavsett grund, vilket inkluderar produktens skick, transport, dess säljbarhet eller lämplighet för ett särskilt ändamål.

CDVI Group

FRANCE (Headquarters)

Phone: +33 (0) 1 48 91 01 02

.....

CDVI FRANCE + EXPORT

+33 (0) 1 48 91 01 02

www.cdvi.com

CDVI AMERICAS [CANADA - USA]

+1 (450) 682 7945

www.cdvi.ca

CDVI BENELUX [BELGIUM - NETHERLANDS - LUXEMBOURG]

+32 (0) 56 73 93 00

www.cdviBenelux.com

CDVI TAIWAN

+886 (0) 42471 2188

www.cdviChina.cn

CDVI SUISSE

+41 (0) 21 882 18 41

www.cdvi.ch

CDVI CHINA

+86 (0) 10 84606132/82

www.cdviChina.cn

CDVI IBÉRICA [SPAIN - PORTUGAL]

+34 (0) 935 390 966

www.cdviIberica.com

CDVI ITALIA

+39 (0) 321 90 573 - www.cdvi.it

CDVI MAROC

+212 (0) 5 22 48 09 40

www.cdvi.ma

CDVI NORDICS [SWEDEN - DENMARK - NORWAY - FINLAND]

+46 (0) 31 760 19 30

www.cdvi.se

CDVI UK [UNITED KINGDOM - IRELAND]

+44 (0) 1628 531300

www.cdvi.co.uk

CDVI POLSKA

+48 (0) 12 659 23 44

www.cdvi.com.pl

All the information contained within this document (pictures, drawings, features, specifications and dimensions) could be perceptibly different and can be changed without prior notice.